

## What's On

**Sept** Robyn Rinehart, Red Tree Gallery

**Sept 1** Garden at Broughton Hall opens for Spring

**Sept 8** J Primary School Soiree

**Sept 8** Landcare talk on electricity alternatives

**Sept 13** Jindivick Progress Assoc. AGM

**Sept 15** Nangara guided tour

**Oct 1** Next Jindivick Market

The JPA's popular local **Jindivick Country Market** resumes on **1 October** and will be open to visitors from 9am–1pm. Nikki will be selling her very popular cakes, jams, sauces and hampers, and there will be a special Scrap 2 Relax stall with every imaginable scrapbooking material. The CFA will run their customary barbeque as well as provide fire-safe advice (summer is coming). **If you would like to book a stall at the Market please email: leeson\_3821@hotmail.com, or phone Don at 0427 968 503.**

**The Garden at Broughton Hall** is looking stunning. It opens for Spring on September 1 (see p 4)



### **Jindivick Progress Association AGM. September 13<sup>th</sup> 7.30 pm, Jindivick Hall.**

The Jindivick Progress Association supports local community activities including this newsletter, the Jindivick Market, Nangara Reserve, the Jindivick Community Garden, and the Jindivick Community Bus. We are holding our AGM on Tuesday Sep.13 and we would welcome interested community members to come along and contribute to our community.

The AGM is quite quick, and while there are some required formalities, there is plenty of opportunity for discussion. If you have any interest in participating in community activities, or simply meeting other residents, please come along.

Supper will be available. Call Graham on 0417 434 464 if you have any questions.

Baw Baw Shire Council is seeking design ideas to help renew six playgrounds including **Jindivick's Jacksons Track Playground**. Council is asking residents if they and their little ones have any thoughts and preferences for new playground equipment to ensure a safe and enjoyable place to play. Community members of all ages are invited to submit their design ideas by **Monday 12 September** via the short survey on Council's website at <https://bawbawshirecouncil.research.net/r/PlaygroundRenewalProgram22-23>

# Jindivick

## NEWSLETTER

SEPTMBER 2022

*If you would like to include information about a local event, club, person etc please contact the editor by email via: [newsletter@jindivick.org.au](mailto:newsletter@jindivick.org.au) or phone 56 253556.*

*The deadline for the October issue is 28 September.*

*This Newsletter is published by the Jindivick Progress Association.*

*We acknowledge the Traditional Owners of this land, the Kurnai people, and pay our respect to their Elders past, present and emerging*

## Regular Events

**St James Anglican Church, Jindivick** services on the first and third Sundays of the month. The Service begins at 11.30: we gather for a cuppa and a bikkie a bit earlier. For further details, ph Faye 0400014226

**Atticus Health, Jindivick** Make an appointment at: [www.atticushealth.com.au/location/jindivick-medical-clinic](http://www.atticushealth.com.au/location/jindivick-medical-clinic) Open Mon—Fri 9-4:30. Sat & Sun 9-3.

**Jindi Craft Group** meets in the Hall, Thursdays, 11am–4pm phone Nikki Cadzow 0447776178

**Jindivick Hall** To book, go to [www.jindivick.org.au/bookings](http://www.jindivick.org.au/bookings). Billiard Room bookings: contact Ros. on 0439 008 501

**Jindi Jems** The next trip will be to The Jindi Caf'. If you'd like to join us please call Maz Ph 0447491502

**Jindivick Knitting Group** meets on the 2nd and 4th Tuesday of the month at the Jindi Caf. We're there from 10-12. Don't knit? Don't worry, just join us for a cuppa and a chat. Give Maz a call on 0447491502 for table booking

**Jindivick Pool Nights** For further info. call Phil on 0444 525 556 Bookings via Ros: 0439 008 501

**Jindivick Singing Group** will meet in June at Jindivick Cricket Club. Music and words provided. For further info contact Linda on 0408346056

**Jindi Writers Group** The Jindi Writers Group meets on Wednesdays at the Jindi Cafe - sometimes from 11.30 am, sometimes from 3.30 pm. If you'd like to join in, please call Jen on 0488 300 423

The **Jindivick Yoga Group** meets at 9:30am on Thursdays for an hour. Ph Janet on 0499 248 302 for more information

**Community Notice** A reminder to **ensure your house and shedding etc are locked** when you are away from home, as there have been some burglaries in the Jindivick area recently. Please look out for cars parked in unexpected spots and if necessary, contact the police.

Everyone at **Jindivick Primary School** has been very busy this term. We have started lunchtime clubs including: chess/checkers, origami (*see below*), karaoke and box-fort. During the cold wet days, many children are enjoying the opportunity to be involved in clubs. Our first Soiree in two years will be held at the Jindivick Hall on Thursday 8th, starting at 7pm. The students are very excited and working hard on their musical items for this year's theme "The 90s" It is always a great night and **all members of the community are invited** (\$5 per family or \$2 donation). Money raised goes to the cost of the hall hire and purchasing items for our music program. The Grade 5/6's recently had a great 'Maths Fun Day' at Neerim District Secondary College. It was run by the Year 10's and full of exciting activities involving lots of maths. (*see right*) Grades 3 - 6 are also very excited about their three day camp to Allambee in the last week of this term. We are all hoping



**Robyn Rinehart** shows her lovely paintings and pastels



at **Red Tree Gallery**. Her works often feature dogs, borzois in particular. Robyn recently moved into abstract art so there will be a variety of subjects and styles. You can see Robyn's work each day from 25 August — 28 Sept.

*Below: Some paltry significance seen in Nangara Road. Graffiti Gnomes*



for sunny days for their camp.



### **Debra H Clucker September 2022**

Wet, wet, wet and it just gets wetter. Well, we could stand around knee deep (what knees?) and grumble about all the puddles and mud or we could do something with it. So, we have constructed a bigger water slide than the one at Gumbaya World! We start up at the church, get a bit of a run up and slide over the humps and through the dips. The aim is to take out the plovers' nest on the way through, but it is hard to line up while ducking and weaving out of the way of those pesky squawking and swooping plovers. Next is the beautifully constructed slalom course through the saplings in the new shelter belt, being careful not to snap them off or there will be big trouble. Just ask the sheep. (Can't imagine why you would want to eat a gum tree!) Then leap over the water troughs without

dropping in. Could we get any wetter? We really pick up some speed halfway down the farm, through the old pines and sift through the mesh gates. A bit of a pile up there as most don't make it through. If you can make it past the gate, the next obstacle is the orchard where a messy gardener pruned the fruit trees and left the branches scattered across our course. (Kinda hoping he'll read this and get the hint). Slip under the debris then head for Main Neerim Road before we slam into the boundary fence: better than slamming into those quarry trucks! Wow, what an awesome ride! Too bad about the walk back up the hill with skid marks on our backsides, trying not to drop into the sink holes to then do it all again. Yehaa!

On another matter, there is a strange feeling of change around here. I can't put my feather on it though. But I'm thinking that I need a change anyway. Go north for the winter. Somewhere warm and peaceful. Somewhere where the egg collectors can't find my eggs. I would pack my bags immediately if I had any. Although, who needs luggage when heading to a warmer climate with all the other locals around here. Yes, the hay shed sounds like the perfect place to wait out this muddy mess.

Bye for now, Dare Devil Debra  
Jindi Free Range Eggs 0402981478



### Anita's Speedy Hummus

If you've ever made hummus from scratch, you know it can be a tedious process. With just a handful of store cupboard ingredients, you can whip this up quicker than a drive to Neerim South.

400 gram tin of chickpeas, drained and rinsed  
2 cloves of garlic  
50 mls of olive oil  
3 tablespoons of peanut butter  
3 tablespoons lemon juice  
1 teaspoon of salt  
1 teaspoon ground cumin



Place all the above ingredients into a food processor and blitz until smooth.  
Taste now to see if more juice, salt or garlic is needed. If it's too thick, you can add a dollop or two of Greek yoghurt or a little more oil.  
Serve with carrot and celery sticks, pita bread or tortillas. You can sprinkle on a little paprika, chopped peanuts, chopped parsley and lastly a drizzle of oil when ready to serve.

### Andrew Casey to present about all things electric!

Jindi resident and Landcarian, Andrew, is an electric nut - or at least an emerging one. Driving an electric car, powering his house with solar and batteries and recently converting his ride-on lawnmower to electric power, Andrew has put himself through trial and error and will share his experiences with us at Jindivick Landcare's first Spring event.

All community members are most welcome to join Andrew and the Landcare group at the Cricket clubrooms from 7pm on September 7th. Supper, and tea and coffee to be provided. For more info, contact Beau at: [beaumilesfilm@gmail.com](mailto:beaumilesfilm@gmail.com).

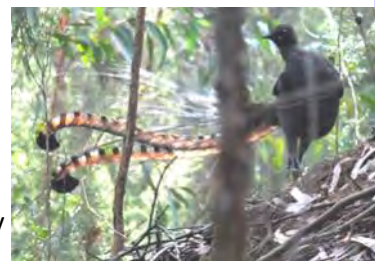


**Nangara Walk and Talk** Peter will again share his expertise on 15 September during a guided tour of Nangara Reserve. Join our local expert and discover our reserve at the start of spring.

Meet at the Nangara Reserve car park at 9am. It's a bit wet at present so wear suitable clothing, especially footwear. Bring binoculars and camera if possible.

### Nangara News

As is well known, the Superb Lyrebird is an excellent mimic. Their mimicry can continue for just several minutes or up to an hour, and might include other birds, chainsaws, dogs barking, etc. The lyrebird's own call is a repeated 'bilik-bilik, bilik-bilik' or sometimes a twanging sound like a taut fence wire. Superb Lyrebirds are fairly sedentary and territorial.



Although seldom seen, except when one dashes across the road, they are pretty common, but for how long is arguable as their habitat of wet forest with plenty of leaf litter is gradually shrinking.

Some lucky locals that live on the edge of some bush will sometimes catch a glimpse of a lyrebird scratching in their garden. There is also plenty of historical evidence of lyrebirds as farm pets.

Lyrebirds feed on seeds, insects, spiders and other small invertebrates, worms and frogs, which they find in the leaf litter. During the day they remain at ground level but at night will fly into the canopy for protection. Breeding season is from June/July through to October. They build a rough domed nest of sticks, fern fronds and grasses on the ground, on a rocky shelf or a stump, or sometimes in the head of a tree fern.

The male clears a patch of ground in the bush and uses it as a display arena in which to attract a female with his singing and dancing. There are many excellent You Tube links of this amazing procedure.



There is estimated to be at least three established lyrebird territories in Nangara Reserve. Calling is often heard to the left hand side of Nangara Loop track just inside the main gate, at the

very southern end of the reserve and at least two locations along Boundary Track at the northern end.

Contributed by the Friends of Drouin's Trees



*While most of the gnomes are hibernating, a group of recently revived poultry enjoyed a winter's day at the beach*

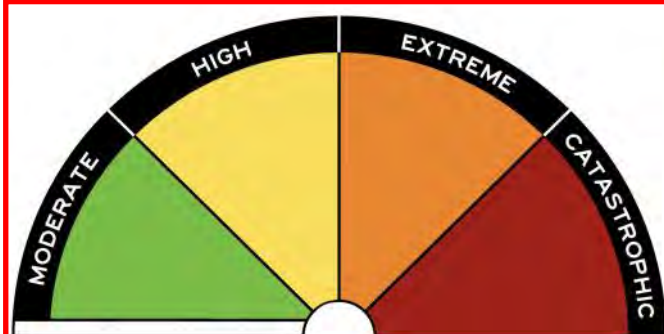




Drouin West CFA

## New Australian Fire Danger Rating System

From September 1 you'll start to see your local Fire Danger Ratings signs being changed for the new system illustrated below. This new four level system replaces the current six level system and has clear actions you need to take depending on the fire risk. You can find out more by visiting [www.cfa.vic.gov.au/afdrs](http://www.cfa.vic.gov.au/afdrs)



### MODERATE

Plan and prepare

### HIGH

Be ready to act

### EXTREME

Take action now to protect life and property

### CATASTROPHIC

For your survival, leave bushfire risk areas

**The Garden at Broughton Hall** opens for the Spring season on September 1 and remains open until December 20, Thursdays to Sundays from 10 am to 4 pm, or at other times by appointment. Our recent rain should ensure that High Spring is amazing in the garden, but don't forget there is so much to see: September bulb time, early October brings Cherry blossom and November is when the roses are perfection. Call in once or many times and witness the changing Spring season at Broughton Hall. David and Philip hope to see you all during this season.



**Atticus Health Jindivick** welcomes Melissa Tooth to the clinic. (see left) Melissa will alternate with Helen for 2 shifts a week in Reception and will join Liz as Practice Nurse on Fridays. She is a happy mum to her brood of 5 children. Her interests are archery, reading, walking, and looking after the tribe. Melissa and Helen will be covering the clinic in September while Toria is away having surgery. Toria has returned from 4 weeks of warm weather in far north WA and Northern Territory.



**Jindivick Progress Association** would like to thank and acknowledge the local businesses and groups that value and support our newsletter and contribute to our vibrant community...**Atticus Health Jindivick, Drouin West CFA, EnergyConsult, Jindi Free Range Eggs, and Red Tree Gallery.** We encourage you all to support them. We also thank and acknowledge 3 donors who have made anonymous contributions...we don't know who you are but you do, and we send our grateful thanks! We are still seeking contributions to support this newsletter, and donations can be made to: The Jindivick Progress Association at BSB 633 000, account number 120 765 102

## Council News.

**Get involved with the issues that matter to you.**

Council is seeking community feedback on many projects and topics that will shape the future of Baw Baw.

Consultations occur throughout the year.

Scan the code to get involved.

**Get in touch with your Councillors**

**Annemarie McCabe**  
Deputy Mayor  
Baw Baw Shire

0427 959 727  
Annemarie.McCabe@bawbawshire.vic.gov.au

**Keith Cook**  
Councillor  
West Ward

0456 950 349  
Keith.Cook@bawbawshire.vic.gov.au

**Tricia Jones**  
Councillor  
West Ward

0428 880 875  
Tricia.Jones@bawbawshire.vic.gov.au

**Council is popping up in a town near you!**

As part of Baw Baw Shire Council's popular Council Pop up program, representatives will be travelling throughout the Shire to speak to locals where they live.

Pop ups are a great way to meet face-to-face with your Councillors and officers to share ideas, raise concerns, or ask questions.

To see upcoming pop up locations visit: [www.bawbawshire.vic.gov.au/CouncilPopup](http://www.bawbawshire.vic.gov.au/CouncilPopup)

**Snap send solve - it's that easy!**

Spotted something that needs fixing? Report it directly to Council using Snap Send Solve.

For emergencies outside of business hours please call 1300 229 229.

» [bawbawshire.vic.gov.au](http://bawbawshire.vic.gov.au)    [f](#) [bawbawshirecouncil](#)    [@bawbawshirecouncil](#)    1300 BAW BAW (1300 229 229)