

What's On

June Judy Mackintosh's work at Red Tree Gallery.

June 14 Public Holiday

June 16 Opening of Gary Miles latest show of paintings *Mt. Arapiles*

June 17 & 18 Pre-release screening, Beau Miles films

Oct 1 Next Jindivick Market

Jindivick

NEWSLETTER

JUNE 2022

If you would like to include information about a local event, club, person etc please contact the editor by email via: newsletter@jindivick.org.au or phone 56 253556.

The deadline for the July issue is 24 June

This Newsletter is published by the Jindivick Progress Association

We acknowledge the Traditional Owners of this land and pay our respect to Elders past, present and emerging

How Jindivick voted in the 2022 Federal Election

286 people travelled to the Jindivick Primary School on Saturday 21 May to vote in the Federal House of Representatives' seat of Monash. First preference votes were as follows:

CANDIDATE	PARTY	VOTES	%
MORGAN, M	The Greens	17	6.23
BROADBENT, R	Liberal	122	44.69
LEONARD, D	Independent	27	9.89
HICKEN, A	Pauline Hanson's One Nation	24	8.79
WELSH, D M	Aust. Federation Party	2	0.73
O'DONNELL, J	Aust. Labor Party	61	22.34
EDWARDS, M	Liberal Democrats	12	4.40
McSHANE, C A	United Australia Party	8	2.93

The above information was sourced from AEC website www.tallyroom.eac.gov.au. For information on how the voting went at the Jindi Free Range electorate see p.2 Counting continues in the seat of Gnome Upper see p.5



Representatives of (from left) The Greens, Australian Labor Party, Liberal Party and Independent candidates handing out how to vote cards at the Jindivick Primary School Polling Booth. They are standing in front of the school's "Dreamtime stories" mural. (See p 4)

Regular Events

St James Anglican Church, Jindivick services on the first and third Sundays of the month. The Service begins at 11.30: we gather for a cuppa and a bikkie a bit earlier. For further details, ph Faye 0400014226

Atticus Health, Jindivick Make an appointment at: www.atticushealth.com.au/location/jindivick-medical-clinic Open Mon—Fri 9-4:30. Sat & Sun 9-3.

Jindi Craft Group meets in the Hall, Thursdays, 11am –4pm phone Nikki Cadzow 0447776178

Jindivick Hall To book go to www.jindivick.org.au/bookings

Jindi Jems The next trip will be to the Court House in Warragul. If you'd like to join us please call Maz for details on:- 0447491502

Jindivick Knitting Group meets at the Jindi Caf every 2nd Tuesday of the month 10-12. Please confirm your attendance with Maz on 0447491502

Jindivick Pool Nights For further information call Phil on 0444 525 556

Jindivick Singing Group will meet in June at Jindivick Cricket Club Music and words provided. For further info contact Linda on 0408346056

Jindi Writers Group The Jindi Writers Group meets on Wednesdays at the Jindi Cafe - sometimes from 11.30 am, sometimes from 3.30 pm. If you'd like to join in, please call Jen on 0488 300 423

The **Jindivick Yoga Group** meets at 9:30am on Thursdays for an hour. Ph Janet on 0499 248 302 for more information

A special request from Rosalie Snoxall "I have Macular degeneration and require an injection in one eye approximately every 12 weeks, at the Boronia Hospital. I have an automatic Mitsubishi Outlander, and I'm hoping someone in Jindivick, could spare the time to drive me to those appointments for a small reward. (Also the Hospital has fine Cafe' in which to while away some time). I would drive myself but the Eye Specialist would prefer me not to. My next appointment is the 12th July."

If you can help Rosalie please phone her on 0466014251

Further news from The Jindi Caf' The Caf is still trading with its usual services and open to all. (it is NOT shutting next week). *The newsletter will keep you posted of any new developments—The Editor*

The Jindi Jems enjoyed high tea at Warragul's Apple Spice Café in May and were very pleased to welcome two new ladies to their little group.



Four Jems also enjoyed a trip to the Tea Cosy Exhibition at Fish Creek on 18th May—and of course a lunch. For June they plan to visit The Courthouse in Warragul. Like to join them? Contact Maz on 0447491502.

Celebrating another Jindivick Creative:

Janet's handsome hand knitted cat tea cosy was much admired when on show in the Fish Creek Tea Cosy Exhibition.

(The Jindivick Knitting Group meets at the Jindi Caf every 2nd Tuesday of the month 10-12—see Regular events p1)



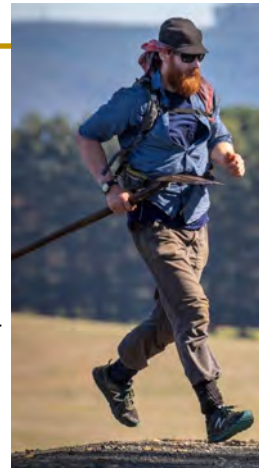
In June **Red Tree Gallery** highlights Judy Mackintosh with her animal, people, and landscape paintings. Judy is a traditional painter and has entered the Archibald prize a number of times. She was a resident Neerim East where she ran a farm with her husband who has since passed. The exhibition starts on the 26th May and the opening is on the 28th from 2 to 4pm. Judy now lives in Melbourne so this exhibition will be a good chance for old friends to catch up with Judy again.



Beau Miles Secret Screenings return to the town Hall on Friday 17th and Saturday 18th June

After sell out shows in May, Beau and the team will again convert the Jindi Hall into a cinema.

Local beer and wine, food, book signing, and of course new and not-quite-finished films to be shown. Lots of chat about the films themselves, and a behind the scenes show and tell into Beaus antics as a local filmmaker. Only a handful of tickets are still available for the shows so be quick to snag a seat! Eventbrite link: <https://www.eventbrite.com.au/cc/secret-screenings-with-beau-miles-143429>



Debra H Clucker June 2022

So much talk about the election, but we girls are allowed to vote here on the farm. We had several candidates, but there was the only one worth voting for. *I* will give you everything. Free food, housing and worming, job security for 12 months, unlimited time outdoors, experience climate change on a day to day basis, and freedom of choice, providing you do as I ask!!

There have been a few rebels, however, leaning towards other parties. The Anti Fluffy Legs party drew some support by directing their preferences to the Hunting Party, while some interest came for the Surprise Party, (no surprises there!). The Tupperware Party fared well early but said they were keeping a lid on it, and the Slumber Party missed the voting deadline because they all slept in.

A simple voting system was used where the colour of the egg indicated who you were voting for. Having first choice of colour, I chose Brown. The final count was, 1250 brown eggs, one White egg (from an independent), and thankfully, no Green eggs were detected on the farm! Bye for now from Vote One for Debra H Clucker
Jindi Free Range Eggs 0402981478



Anita's Marmalade Cake

Lemon, Seville, Blood Orange: any type of marmalade will do to make this simple cake.

The sweet scent of citrus, whilst it's baking, will have you impatiently waiting by the oven door.

110g butter - softened

110g caster sugar

2 eggs

110g self-raising flour - sifted

4 heaped tbsp marmalade

50 icing sugar - sifted

Beat butter and sugar together until pale and creamy. Beat in eggs, one at a time, add flour, quick beat, then add 3 tablespoons of marmalade.

Place mix into a lined loaf tin.

Bake at 170 c for roughly 30 to 40 minutes or until cooked.

The cake will puff up golden brown and crack in the centre - not to worry.

Cool in tin for 30 minutes.

When cake is cold make the icing: Sift icing, stir into it your last tablespoon of marmalade.

Stir until smooth.

Pop the kettle on now and enjoy.



Now that Covid restrictions are relaxed **The Billiard / Pool Room** in the Jindivick Hall is available for bookings. Get together with your family or friends to have a game. The room has a full size 1930s Slate Alcocks table, (recently recovered) with Cues and Balls etc. The room has an air conditioner. Anyone interested in using the room can contact Ros on 0439008501. Cost of hire is \$40.00

St James Anglican Church, Jindivick The Autumn weather gives way to bleak mid-winter days with the cold wind rattling the weather boards; some of those days will be Sundays. But we don't shiver inside an icy box. We are rejoicing in warmth and comfort with our lovely reverse cycle heater. Hey, here's an idea, why don't you come and check it out one wintery first or third Sunday at 11am..... We'll save a spot for you..... For more info ph Fay: 0400014226

Nangara Notes



Lace Monitor

'Goanna' is said to be a corruption of 'iguana', an unrelated species. Around the rest of the world, members of the 'goanna' family are known as monitor lizards. The goanna in eastern Australia is properly known as

a Lace Monitor, *Varanus varius*.

During a recent excursion in Nangara Reserve, a young Lace Monitor suddenly appeared on the bank of the upper dam, beside Quarry Track. Interestingly, the young monitor explored the leaf litter beside the dam for a while then headed straight into the reed beds on the water. The animal spent some time thrashing around in the water and reeds before climbing back out and wandering off down the track.



Goannas are the only lizard to have a snake-like forked tongue and an organ in the roof of their mouths that together, enables them to 'taste' the air and follow a scent trail for finding food.

Lace Monitors are generally most active in spring and summer. In winter they become sedentary and may only emerge to bask in some sunshine. Lace Monitors are usually solitary but can congregate into small parties during the breeding season. They are also territorial and can occupy a range of up to 60 or more hectares. Tree hollows are the most common form of shelter for Lace Monitors but they will also use hollow logs on the ground and sometimes burrow in the ground.

Lace Monitors are pre-dominately carrion eaters but will take insects, small mammals, birds and their eggs. Many rural dwellers will have stories of Lace Monitors raiding their chook sheds. Monitor numbers are often higher around bush picnic areas where they rely on food scraps. This can be a problem as they risk harm from ingesting discarded plastic food containers, etc.

Recent research suggests that Lace Monitors are in fact able to inject a mild venom which has little effect on humans but can effectively subdue small prey. The Lace Monitor is listed as endangered under the Victorian Flora and Fauna Guarantee Act.

Where there's a juvenile, it probably means there has to be a parent. Anyone seen a 2m lizard in Nangara lately?

Friends of Drouin's Trees



The **Jindivick Landcare Group** had a wonderful pizza and presentations evening with a group of **Jindivick P.S.** students who recently completed a citizen science project to monitor what was living in their creeks, using DNA to identify species.



Each of the students presented their findings to the Landcare group with a short talk and a poster or Power-Point slides. The excitement and knowledge that the students shared on the night was amazing! We all had a really interesting night and thank each student for coming along and sharing what was living in their creek. Thanks also to the wonderful teachers who helped the students with their projects! And what did the students find? 9 species of fish, 4 species of frogs, 10 species of birds, 7 species of mammals, and 4 species of domestic livestock. Well done students!



Former Jindivick resident **Adam James** and one of his **Kelpies, Myamba Moss** (former Australian champion)



have left for the UK and Germany. The pair have been invited by the British Association of True Working Kelpies (BATWK) to conduct several clinics in the training and working of Australian Kelpies. While there, the duo will compete in various sheepdog trials and test themselves against the best in Britain. They will

also participate in sheep and cattle Expos across the UK. *Photo above: Adam and Moss meet Welsh Border Collie breeder Aled Owen*

Adam grew up in Jindivick and, after completing his degree in Agricultural Science, moved to outback NSW where he managed a mixed sheep and cattle property for 7 years. He moved back to Victoria this year and is



Above Verity, Edison, Evie, William and Lucas—some of the confident Foundation students.

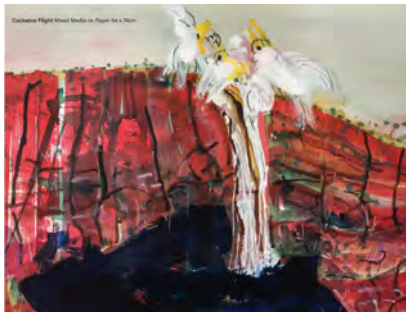
Jindivick Primary School is nearly at mid-year already. Our Foundation students have settled in very well. We recently welcomed William Le Brocq to our Foundation group (as well as his big brother Jacob in Grade 1). The Grades 3 -6's are all currently on a four day camp at Portsea. The reports are that they are having a wonderful time. It is the first camp for our students since 2019. The Grade 3 - 6 students are also looking forward to a performance at the Warragul Arts Centre next Tuesday 31st. They are going to see 'The Alphabet of Awesome Science' performed by 'The Science Gang'. The students have recently been working on a beautiful dreamtime mural for National Reconciliation Week. We are very proud of our Art Teacher, Miranda Stewart, who is currently performing at Warragul Theatre Company's production of 'Les Miserables'.



Above: Justice, Evie, Matthew and Chloe stand proudly in front of the Dreamtime Mural.

Assistant Manager at Glenaroua Station which runs 20,000 Merino sheep and 650 Angus cattle. He also runs Jindi Kelpie Stud, working, training, and trialling his Kelpies on sheep and cattle. Adam and his dogs have won numerous titles which include, 2 National Field wins, 1 National cattle win, several Victorian state championships, and other state titles. Best of luck to Adam and Moss in their venture.

Gary Miles latest paintings show, *Mt. Arapiles*, will be officially opened at 7pm by Simon Gregg on 16th June. (Join Gary from 5pm). The show will be open on weekends from 11-5pm until 17 July at Bradley Hall 12, Old Telegraph Road West, Drouin West. Other visits by appointment: Maggie 0407 343 606 Gary 0407 443 606 It will then be open every weekend from 11-5pm until July 17th or on weekdays by appointment. Bradley Hall, 12 Old Telegraph Road West, Drouin West.



The Jindivick Gnomes have discovered that Jindivick has a Community Bus and somehow managed to catch up with it in the main street. They immediately boarded it and attempted to set off to do some sightseeing. Our photographer caught up with them as they were queuing to get on board. I'm not sure if the adventure was a success but trust that a good time was had by all...



Another enjoyable **Jindivick's Australia's Biggest Morning Tea** has held in the Hall on 19th May to raise money for the Cancer Council. Attendees enjoyed a yummy lunch, and joined in the raffle and door prize.

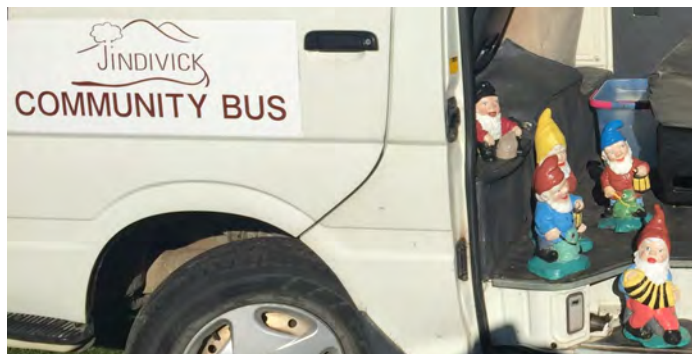


Clockwise from above: Nikki making soup, Enjoying the company, The cakes and slices disappeared very quickly

HOW TO READ A RAT TEST



Did you know we have a **Community Bus in Jindivick**? Available for hire by all locals on a daily basis for just (\$80.00 per day plus fuel and any tolls incurred. It seats 11 including the driver). Please contact Derek on 0458922089 for further information and to book, or go to: www.jindivick.org.au for bookings.



BBSC is currently conducting **domestic animal registration checks** Regi-Check ambassadors are door knocking on behalf of Baw Baw Shire Council to assist residents with their pet registration needs and providing advice and information registering all cats and dogs over the age of 3 months They must be registered with Council and must be microchipped as per State Government regulations.

Pet registration details need to be updated with current contact details, and pets should wear a registration tag so that if lost or found roaming pets can be returned to their owner.

Residents who have not yet received their animal registration notice are encouraged to contact Council on 5624 2411. To register your domestic animal, go to: www.cognitofirms.com/BawBawShireCouncil/ApplicationToRegisterDomesticAnimals

Above left: Warwick's RAT test advice

Left: Little May (at front) was keen to help the Jindivick Primary students with their presentations at the Landcare meeting (see p.4)





Drouin West CFA Graeme Higgs Honoured



A volunteer for nearly 50 years, Graeme Higgs has received an Australian Fire Service Medal (AFSM) in this year's Australia Day Honours, in recognition of his dedication to CFA. Graeme, along with his wife Chris attended Government House where he formally received his AFSM Medal from the Victorian Governor, Linda Dessau.

Graeme joined Drouin West Brigade as a teenager and his leadership potential was recognised—he has served in leadership roles for most of his time, including 20 years as brigade captain, junior leader, and his current position as Deputy Group Officer. Graeme is one of CFA's exceptional operational leaders and through his management of Drouin West Fire Brigade has helped to make the communities of Jindivick and Drouin West, and Victoria more widely, a safer place.

His expertise has been greatly valued during his participation in campaign fires in Victoria and interstate, where he has carried various roles including strike team leader, sector commander and divisional commander.

When asked about his AFSM award, Graeme said he was quite surprised. "It's an honour to be recognised for something I enjoy doing. I do it to help people and usually can't say no...I accept this AFSM on behalf of all the crews I've led and worked with over the years. Many thanks to Drouin West Brigade members for their support and teamwork." Graeme has a reputation for being technically competent and trust-

ed by those he leads because the welfare of his crews is always front of mind. As captain, Graeme identified the need for change and led the transition of Drouin West Brigade to one capable of responding in a professional manner to the range of incidents typical of an active urban/rural interface brigade.

His leadership in the 2009 fires, especially the Bunyip State Forest fire, inspired confidence in the strike teams he led and in the members of the Labertouche community.

"In the week leading up to Black Saturday, it was very hot and then a storm came through and we had about 11 lightning strikes. All were extinguished except for one in the Bunyip State Forest. We had 190 callouts on Black Saturday and over the following weeks. I took three

weeks off work to take on divisional commander roles as we had strike teams coming into our area all the time to help our brigade manage the massive amount of calls."

He has been Deputy Group Officer since 2002 taking special interest in the group's communications and operating procedures, and group training exercises.

A lasting tribute to Graeme's outstanding contribution in the Labertouche area on Black Saturday is in the Nangara Reserve. As part of the restoration of the reserve, the local community replaced the many wooden carved statues that were lost and one of the new concrete sculptures is of Graeme, the firefighter.

"I feel proud that the statue of me was made. It represents the effort of all local firefighters."

Jindivick Progress Association would like to thank and acknowledge the local businesses and groups that value and support our newsletter and contribute to our vibrant community...**Atticus Health Jindivick, Drouin West CFA, EnergyConsult, Jindi Free Range Eggs, and Red Tree Gallery.** We encourage you all to support them.

We also thank and acknowledge 3 donors who have made anonymous contributions...we don't know who you are but you do, and we send our grateful thanks!

We are still seeking contributions to support this newsletter, and donations can be made to: the Jindivick Progress Association at BSB 633 000, account number 120 765 102



Council News.



Your West Ward Councillors



Deputy Mayor
Annemarie McCabe
0427 959 727
Annemarie.McCabe@bawbawshire.vic.gov.au



Cr Keith Cook
0456 950 349
Keith.Cook@bawbawshire.vic.gov.au



Cr Tricia Jones
0428 880 875
Tricia.Jones@bawbawshire.vic.gov.au

Community Sponsorship funding round 2022/23.

Local residents and community groups looking to compete in or attend an event in which they will be representing Baw Baw Shire can apply for up to \$5000 in funding support through Council's 2022/23 Community Sponsorship Program.

When you can apply:

Round 1
Opens: 4 July 2022
Closes: 1 August 2022

Round 2
Opens: 6 March 2023
Closes: 3 April 2023



For more information scan the code or visit www.bawbawshire.vic.gov.au/CommunitySponsorship

Get involved with the issues that matter to you.

Council is seeking community feedback on many projects and topics that will shape the future of Baw Baw.



Community consultations occur throughout the year. Scan the code to get involved.

Snap send solve - it's that easy!

Spotted something that needs fixing? Report it directly to Council using **Snap Send Solve**.



For emergencies outside of business hours please call 1300 229 229.

>> bawbawshire.vic.gov.au [f bawbawshirecouncil](https://www.facebook.com/bawbawshirecouncil) [@bawbawshirecouncil](https://www.instagram.com/bawbawshirecouncil) 1300 BAW BAW (1300 229 229)